

First Exam

Write all answers in your blue book and show all work there. Return your exam in your blue book.

10 pts.

1) Under what circumstances will a sales tax be passed entirely on to consumers? Draw a diagram of this.

12 pts.

2) Suppose that demand is $Q_D = 200 - 2P$ and supply is $Q_S = -90 + P$ and there is a 10 dollar sales tax.

What is the market price, the price to the buyer and the price to seller?

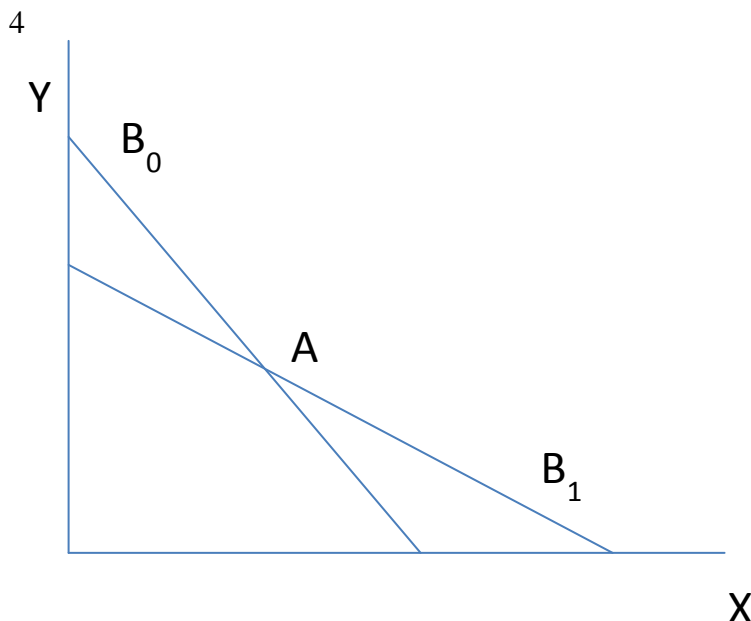
18 pts.

3) This table shows hours needed to produce goods 1 and 2.

	Hours per job	
	G1	G2
Casey	10	20
Tony	5	15

- Can Casey and Tony specialize and trade and both benefit? Why?
- Find the opportunity costs and suggest a price for the trade.
- At this price, show that they both benefit from trade or not.

16 pts.



Suppose that prices change so that the budget line shifts from B_0 to B_1 and that initially utility is maximized at point A.

- a) What will happen to real income if the Laspreyes method is used?
- b) What will happen to utility? Sketch such a diagram and say if consumption of X will go up or down.

18 pts

- 5) a) Draw a well-labeled diagram where the price of X and income change but the level of utility doesn't change. What kind of "effect" have you just illustrated?
- b) Add a second diagram where you sketch a demand curve that goes with the part a changes. Is a compensated or uncompensated demand curve? Why?

14 pts.

- 6) Suppose that $Y = 9 + 5X - X^2 + .25X^3$
- a) Find Y' .
- b) Find Y''
- c) Use parts a and b to draw a well-labeled diagram of the function..

.

12 pts.

- 7) a) Suppose $Y = 10XZ$ and $Z = f(X)$, find dY/dX .
- b) Suppose $Y = Z^2$ and $Z = f(X)$, find dY/dX .

I have neither given nor received unfair aid on this test.
